

PROMOTING THE ECONOMIC DEVELOPMENT OF THE CITY

In order to reduce socio-territorial inequalities, the Master Plan defines the strengthening of urban hubs, spreading and multiplying jobs supply through the entire city. It will develop axes, technological parks, perimeters and areas reserved for economic development, in different parts of the city. The strategies implemented in these areas, such as urban and fiscal incentives, combined with the amplification and qualification of an infrastructure network (such as the transport system), encourage and foster the development of productive activities in the urban space.

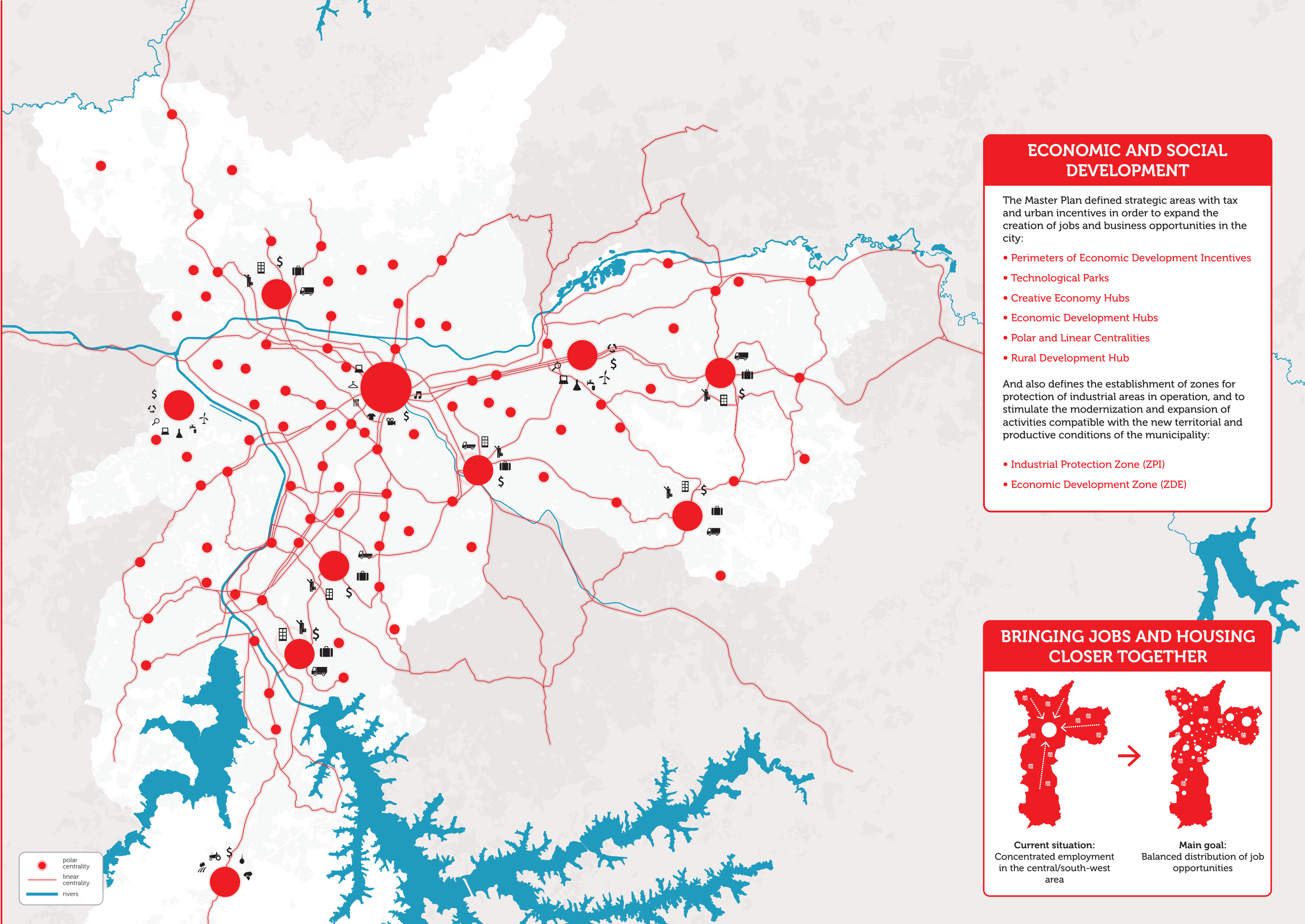
- 

BALANCING THE DISTRIBUTION OF EMPLOYMENT OPPORTUNITIES IN THE CITY: STRATEGIC HUBS FOR ECONOMIC DEVELOPMENT AND LOCAL CENTRALITIES
- 

PROTECTING EXISTING INDUSTRIAL AREAS AND CREATING NEW AREAS ABLE TO ATTRACT INVESTMENT IN ECONOMIC ACTIVITIES
- 

ENHANCING CREATIVE CAPACITY AND SCIENTIFIC AND TECHNOLOGICAL KNOWLEDGE: CREATIVE ECONOMY HUBS AND TECHNOLOGY PARKS
- 

PROMOTING THE INFRASTRUCTURE REQUIRED FOR SUSTAINABLE DEVELOPMENT



ECONOMIC AND SOCIAL DEVELOPMENT

The Master Plan defined strategic areas with tax and urban incentives in order to expand the creation of jobs and business opportunities in the city:

- Perimeters of Economic Development Incentives
- Technological Parks
- Creative Economy Hubs
- Economic Development Hubs
- Polar and Linear Centralities
- Rural Development Hub

And also defines the establishment of zones for protection of industrial areas in operation, and to stimulate the modernization and expansion of activities compatible with the new territorial and productive conditions of the municipality:

- Industrial Protection Zone (ZPI)
- Economic Development Zone (ZDE)

BRINGING JOBS AND HOUSING CLOSER TOGETHER

Current situation: Concentrated employment in the central/south-west area

Main goal: Balanced distribution of job opportunities